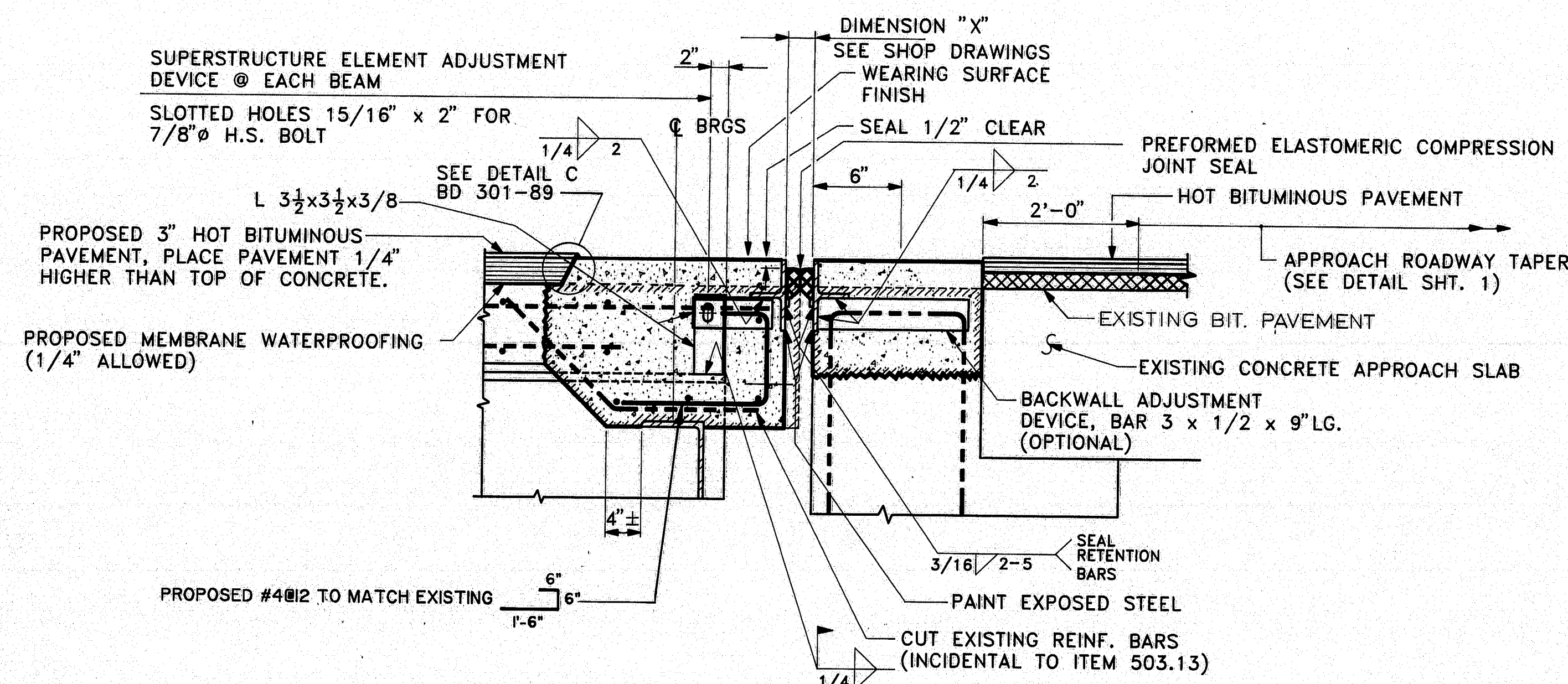


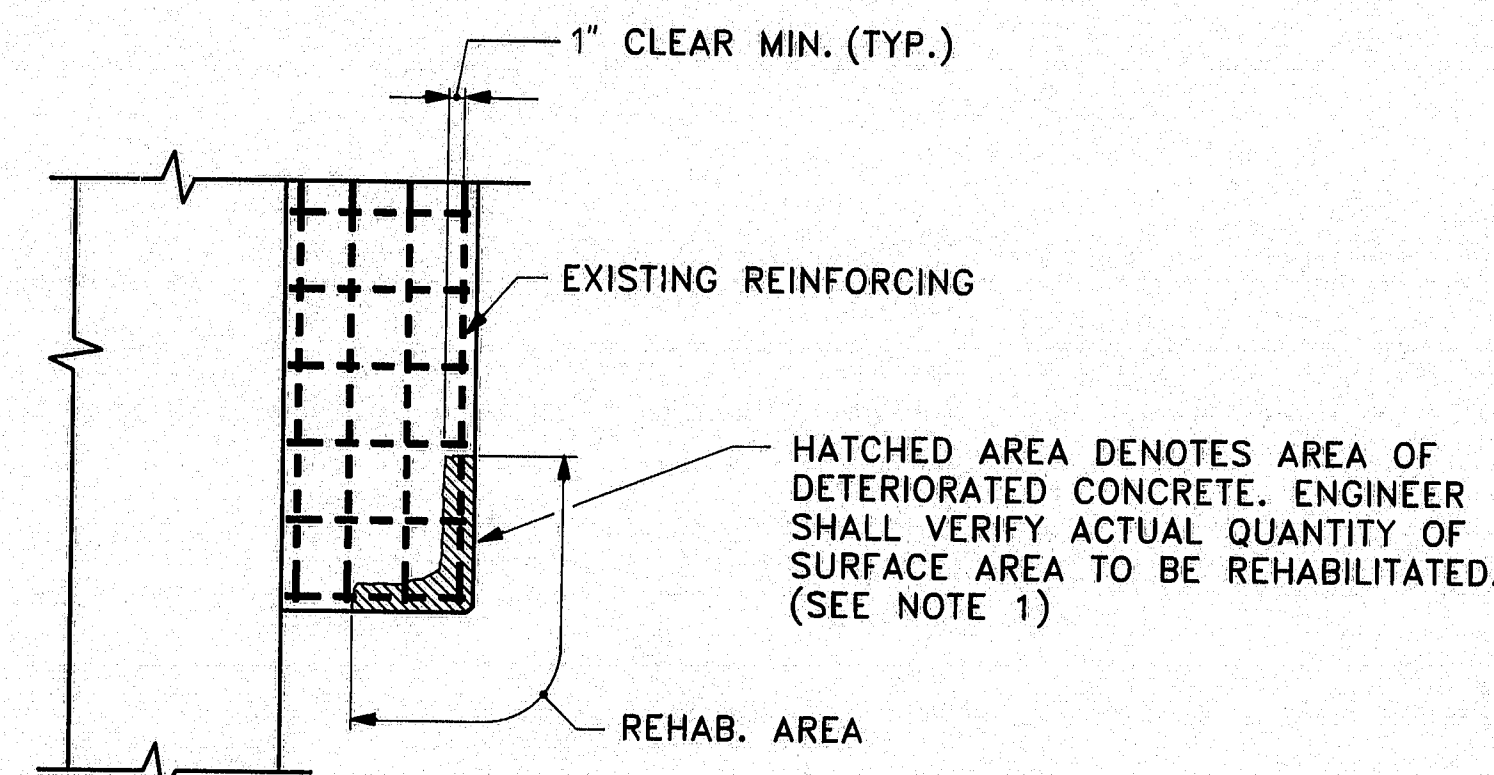
ESTIMATED QUANTITIES

ITEM NO.	DESCRIPTION	QUANTITY	UNIT
202.127	REMOVAL OF EXISTING BITUMINOUS PAVEMENT	0.23	L.S.
202.202	REMOVING PAVEMENT SURFACE	475	S.Y.
403.10	HOT BITUMINOUS PAVEMENT, GRADING D	142	TON
503.12	REINFORCING STEEL, FABRICATED AND DELIVERED	220	lbs.
503.13	REINFORCING STEEL, PLACING	220	lbs.
506.142	FIELD PAINTING EXISTING STRUCTURAL STEEL	0.23	L.S.
508.13	MEMBRANE WATERPROOFING	0.23	L.S.
515.21	PROTECTIVE COATING FOR CONCRETE SURFACE	0.03	L.S.
518.21	REHAB. OF STRUCTURAL CONCRETE SUBSTRUCTURE	124	S.F.
518.30	REHAB. OF STRUCT. CONC. SLAB TO REINFORCING STEEL	283	S.F.
518.31	REHAB. OF STRUCT. CONC. SLAB TO BELOW REINF. STEEL	113	S.F.
518.34	REHAB. OF CONC. CURBS & SIDEWALKS (INCL. SURFACES)	160	S.F.
518.35	REHAB. OF CONC. CURBS & SIDEWALKS (HORIZ. SURFACES)	220	S.F.
520.2402	BRIDGE JOINT MODIFICATION - LUNT ROAD	2	EA
606.35	GUARD RAIL DELINEATOR POST	4	EA
606.364	GUARD RAIL, REMOVE, MODIFY AND RESET	675	L.F.
606.751	WIDEN SHOULDER FOR BREAKAWAY CABLE TERMINAL	4	EA
606.77	BREAKAWAY CABLE TERMINAL	4	EA
609.38	RESET CURB TYPE I	15	L.F.
627.63	4 INCH SOLID YELLOW PAVEMENT MARKING LINE	750	L.F.
627.65	WHITE OR YELLOW PAVEMENT AND CURB MARKING	25	S.F.
627.67	REMOVING PAVEMENT MARKINGS	150	S.F.
627.68	TEMP. 4" PAINTED PAVE MARKING LINE, YELLOW OR WHITE	750	L.F.
639.19	FIELD OFFICE TYPE B	0.2	EA
643.7202	TEMPORARY TRAFFIC SIGNAL - LUNT ROAD	1	L.S.
652.310	TYPE I BARRICADE	15	EA
652.311	TYPE II BARRICADE	3	EA
652.330	DRUM	10	EA
652.340	CONE	3	EA
652.350	CONSTRUCTION SIGNS	165	S.F.
652.361	MAINTENANCE OF TRAFFIC CONTROL DEVICES	0.17	L.S.
652.380	FLAGGER	200	MH
659.10	MOBILIZATION	0.17	L.S.

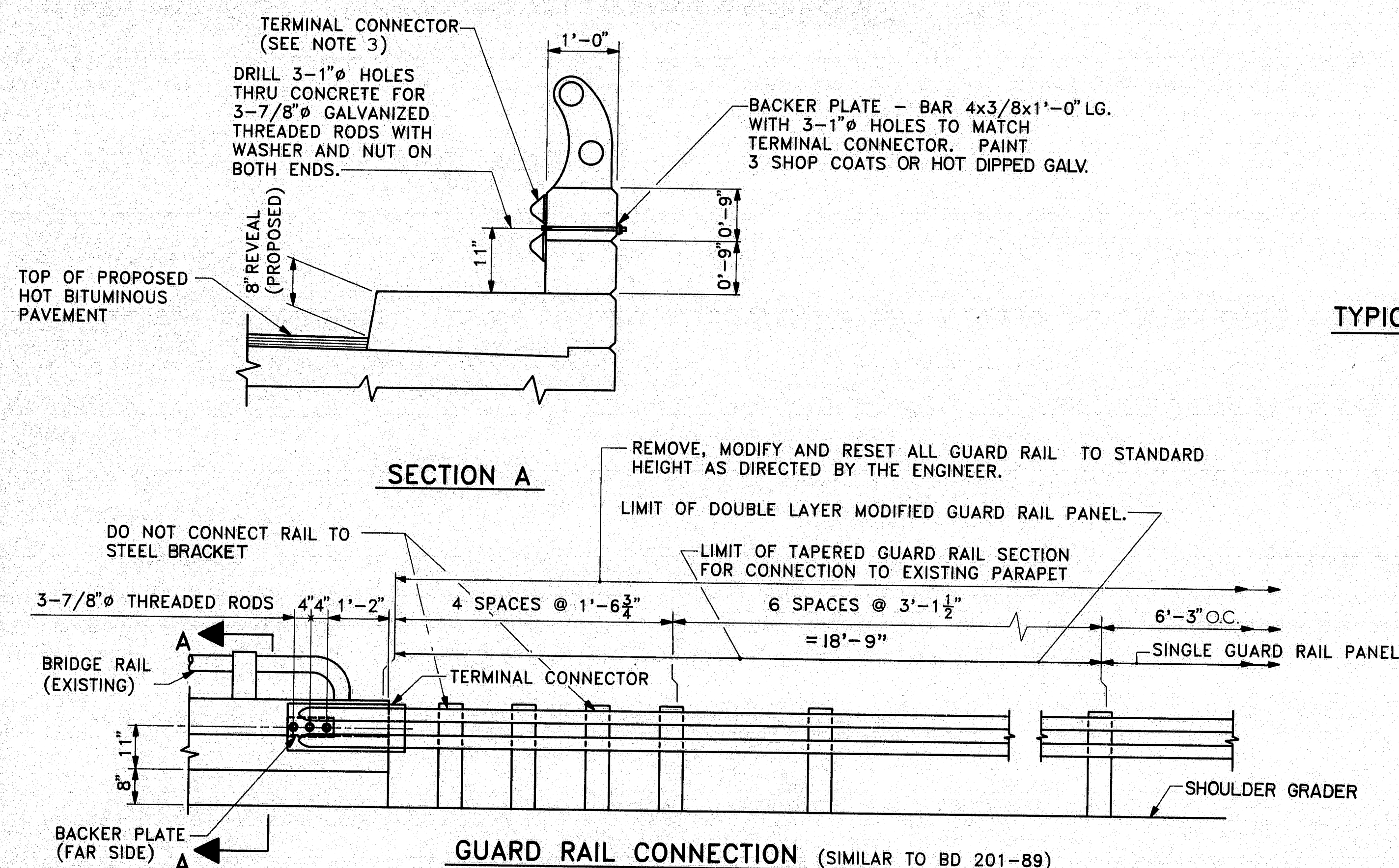


EXPANSION JOINT DETAIL

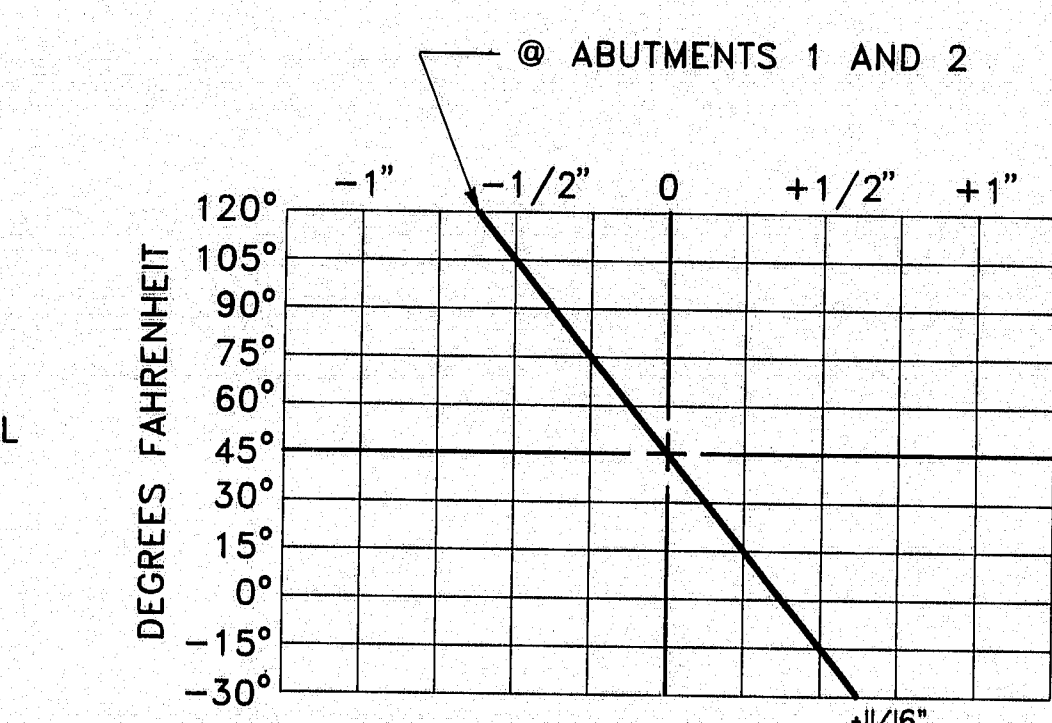
(SEE STANDARD SHT. BD125-82 FOR DETAILS NOT SHOWN)



TYPICAL ABUTMENT REHABILITATION - PLAN



GUARD RAIL CONNECTION (SIMILAR TO BD 201-89)



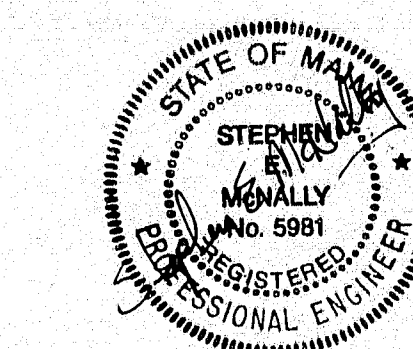
COMPRESSION SEAL ADJUSTMENT CHART

THE TEMPORARY SIGNAL CONTROLLER SHALL BE A TWO-PHASE PRETIMED CONTROLLER. IT SHALL OPERATE AS SHOWN BELOW.

INTERVAL	SEQUENCE OF OPERATION						WHERE
	1	2	3	4	5	6	
HEADS	EB	G	Y	R	R	R	G
WB	R	R	R	G	Y	R	Y
TIMING 60	17	3	10	17	3	10	
SECOND DIAL							

SYMBOLS

- EXISTING CONCRETE TO BE REMOVED
- NEW CONCRETE



104-863

Pin No. 2811.00
Bridge No. 5829

STATE OF MAINE
DEPARTMENT OF TRANSPORTATION

Kimball Chase
ONE GATE STREET
PORTSMOUTH, N.H. 03801
(603) 431-2520

LUNT ROAD

over

I-295

FALMOUTH, MAINE

CUMBERLAND COUNTY

DETAILS & EST. QUANTITIES

SHEET 2 OF 2 AUGUSTA, MAINE AUGUST 1989

REVISED AS-BUILT Jeffery R. Whelan 3/91